



Buckinghamshire
Fire & Rescue Service

Fire & Rescue Service updates

Haddenham and Waddesdon
Community Board



Agenda

POINTS OF DISCUSSION

01 Our organisation

02 Community safety initiatives

03 Summer pressures 2022

04 New challenges



Our organisation



Buckinghamshire & Milton Keynes Fire Authority



How is the Authority made up

- 5 councillors from Milton Keynes council
- 12 councillors from Buckinghamshire Council
- 11 conservative, 3 Labour, 3 Liberal Democrat



Simon Rouse
Chair of the Fire Authority



Buckinghamshire Fire & Rescue Service



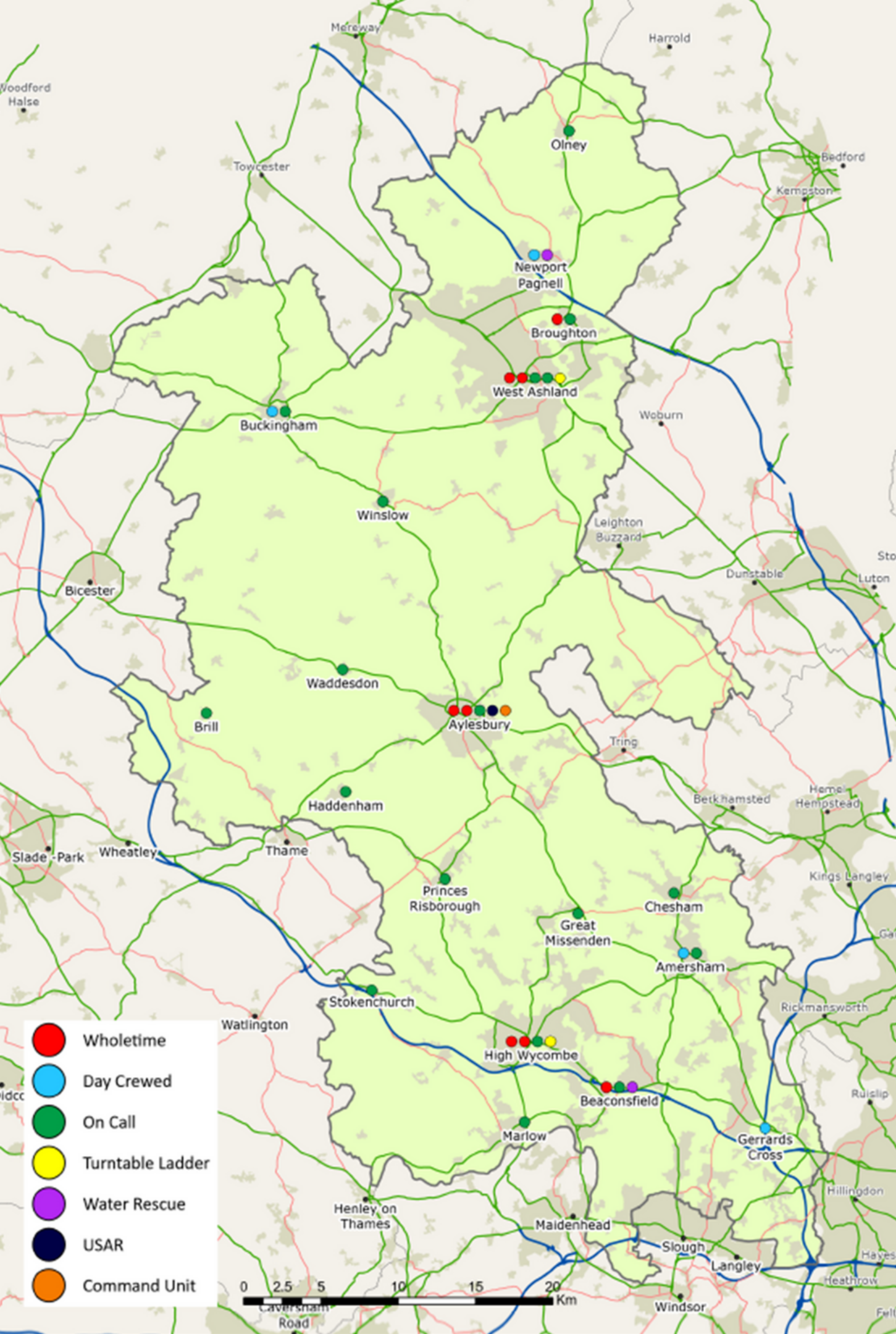
Our people

- 300 Wholetime (full time) Operational staff
- 96 On-Call (part time contracted) Operational staff
- 126 support staff



Jason Thelwell
Chief Fire Officer



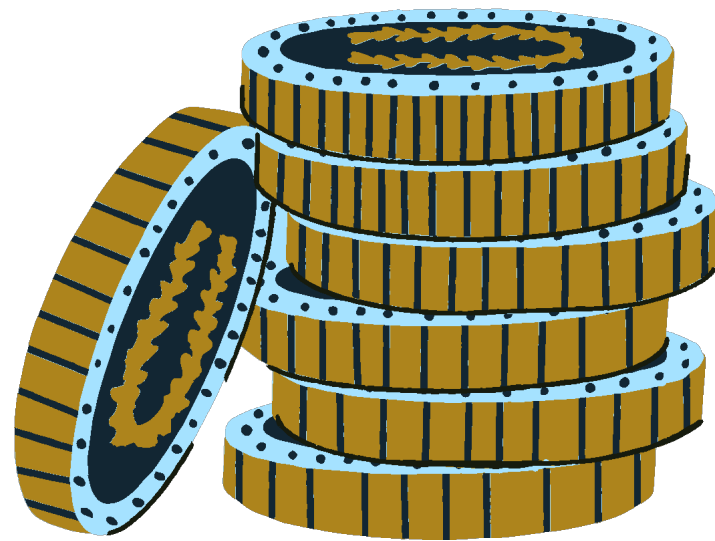


Our Fire Stations

- 9 Wholetime stations, 7 of which have On-Call units
- 10 stand alone On-Call stations
- 30 Fire Appliances
- 10 specialist appliances
- 5 Urban Search and Rescue Modules



Our finances



| SOURCE | £ M |
|--|------------------------|
| Business Rates and Revenue support Grant | £9,389 |
| Specific Grants | £1,110 |
| Council Tax | £22,981 |
| Total | £33,480 Million |



Community safety initiatives



Our vision

To ensure Buckinghamshire and Milton Keynes are the safest places in England in which to live, work and travel.



OUR FOUR COMMUNITY SAFETY PRIORITIES



SAFER HOMES



SAFER NEIGHBOURHOODS



SAFER ROADS



SAFER ENVIROMENT

The community safety priorities under pin, what we call internally, our Prevention Strategy which has been rewritten for 2022.



Aylesbury Service Delivery Area



Better Understanding the Local Community, Risk and Incident Trends

This document is designed to assist all staff to understand the local community and environment within Aylesbury Service Delivery Area. This report includes information about demographics, the built environment and fire service specific risks within Aylesbury Service Delivery Area.

This document is an introduction into the local demands and challenges which are specific to Aylesbury Service Delivery Area and should be a building block to inform the development of Aylesbury station plans and activities.

Service delivery areas

Community Prevention is divided into Service Delivery Areas with a wholetime station at its core

Haddenham and Waddesdon Community Board area forms part of the Aylesbury Service delivery area

- Wholetime Station- Aylesbury Fire Station
- Station Commander Kev Mercer
- On-Call Stations-Haddenham and Waddesdon Fire Stations
- Station Commander Paul Henderson



Aylesbury service delivery area

Community safety priorities

Reduction in accidental dwelling fires

Focusing on the over 80's
Home Fire Safety visits
Fire sense



Reduce Secondary fires

Unattended bonfires, fly tipping
Fire setters



Road safety

Partner agency activity
Pre driver theatre education programme
Better Biker



Community Engagement

Schools year 5



Summer pressures 2022

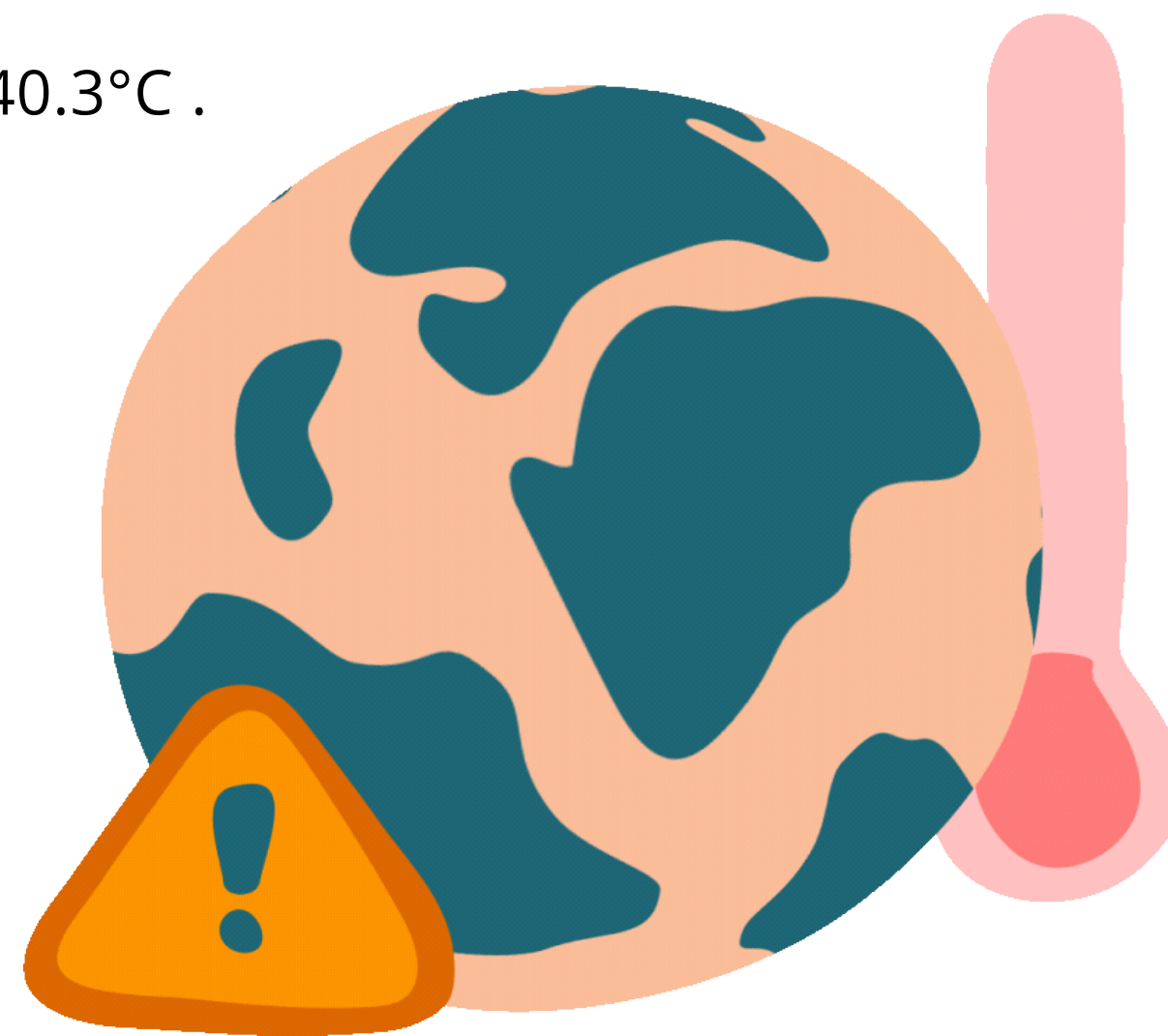


Record temperatures

The months of July (16 - 19) and August (9 - 15) 2022, brought record high temperatures and dry weather that presented many challenges for Fire and Rescue Services (FRSs) and other emergency responders across the country.

The Met office issued its first red warning for heat affecting central and south England, which was in place for 18 & 19 July.

On the 19 July the UK recorded its highest ever temperature of 40.3°C .



Major Incidents declared

By Buckinghamshire Fire & Rescue

On Tuesday 19 July two major incidents were declared, one in the north of the county at 13:05

- Kiddi Caru Nursey Walnut Tree Milton Keynes

One in the south of the county at 14:37. Whitehouse Farm,

- Wooburn Moor, High Wycombe

In the following three hours, BFRS supported by neighbouring FRS's were also mobilised to large scale, protracted incidents at Chearsley, Buckland and Denham resulting in resources being exceptionally stretched.



Service Wide Major Incident

Servicing five major fires across our area, two of which were declared major incidents from the scene of operations, triggering the declaration of a Service wide major incident, supported by the Thames Valley Local Resilience Forum (TV LRF).

BFRS were ably assisted by many of our neighbouring Services including Oxfordshire, Northamptonshire, Bedfordshire, Royal Berkshire, Hertfordshire and a specialist water carrier from Dorset and Wiltshire, despite them all being under operational pressures themselves.



**MAJOR
INCIDENT**

Calls taken by Thames Valley Fire Control Service (only) for incidents in Bucks

Major incidents were declared by fifteen FRSs across the country including neighbouring services in London, Bedfordshire and Hertfordshire, as a result of the devastating outbreak of fires.

The Service attended an unprecedented number of calls, including many fires in the open / wildfires.

BFRS has debriefed, reviewed and collated the information from this period to improve our service delivery and staff welfare at future events.

| DATE | Prev five-year average | 2022 | Increase % |
|--------|------------------------|------|------------|
| 16-Jul | 48 | 180 | % |
| 17-Jul | 48 | 78 | 64% |
| 18-Jul | 64 | 85 | 34% |
| 19-Jul | 41 | 220 | 439% |
| 09-Aug | 45 | 108 | 139% |
| 10-Aug | 40 | 75 | 89% |
| 11-Aug | 49 | 108 | 121% |
| 12-Aug | 44 | 157 | 258% |
| 13-Aug | 50 | 106 | 111% |
| 14-Aug | 45 | 96 | 115% |
| 15-Aug | 41 | 84 | 105% |



New Challenges



Horizon scanning

- HS2 – the second longest tunnel in the UK will be beneath the Chiltern Hills
- Climate change-hotter summers, wetter winters
- Development within Buckinghamshire and Milton Keynes
- Fire Reform White Paper





ANY QUESTIONS

